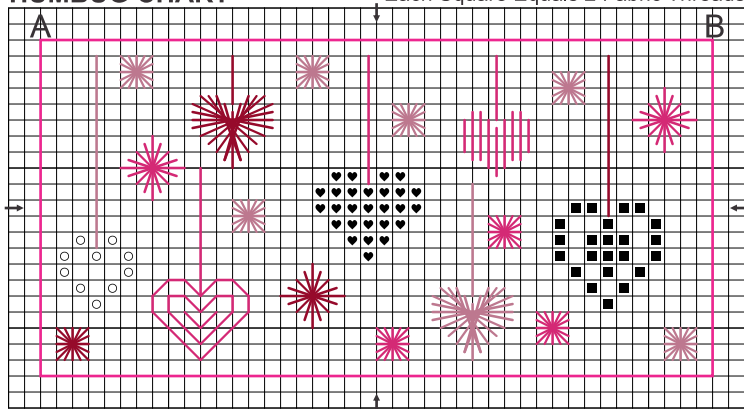


Be Mine Sweet Valentine

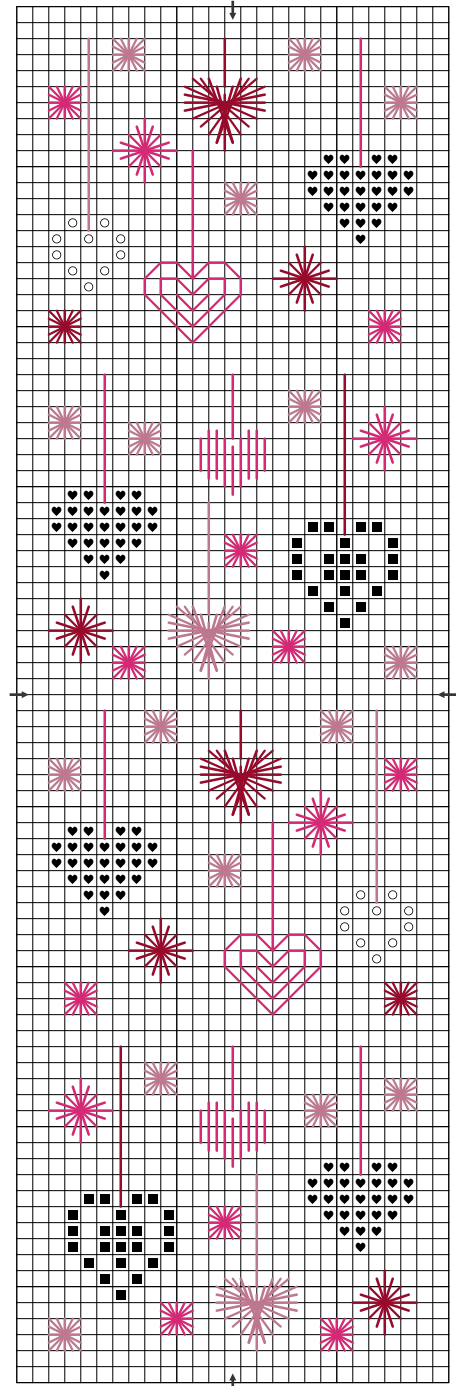
HUMBUG CHART



Design is 42 stitches wide x 21 stitches high

BOOKMARK CHART

Each Square Equals 2 Fabric Threads



Design is 23 stitches wide x 82 stitches high

SYMBOL & THREAD SUGGESTIONS

Use two strands of thread unless otherwise directed.

- and — DMC 316
- ♥ and — DMC 3804
- and — DMC 777

 Square Algerian Eyelet

 Rhodes Heart  Diamond Eyelet

The Humbug fob/ornament pictured on the left was created using 28ct white/pearlescent Cashel linen. You will need a 7.5cm (5") square of 28 ct fabric to stitch the fob comfortably.

If you wanted to stitch the bookmark on 28 ct you would need a rectangle which is 23cm (9") high x 10cm (4") wide.

HUMBUG INSTRUCTIONS

Complete cross stitches, eyelets and Rhodes Hearts (see over for stitch diagrams if necessary).

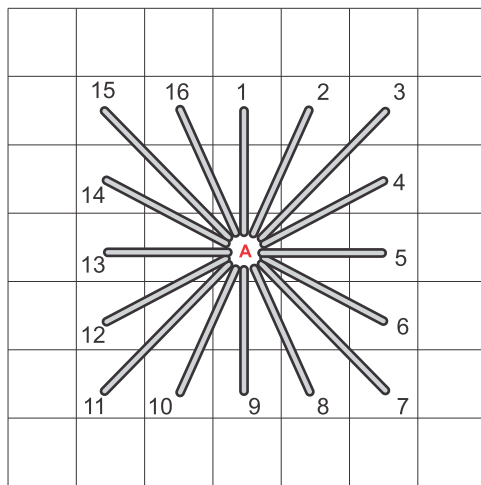
Use two strands of thread to complete satin stitch heart.

Use one strand of thread to complete backstitch heart, heart 'hangers' and rectangle around design.

For instructions on how to finish the humbug go to my website

www.janiehubble.com.au/make-a-humbug-fobornament/

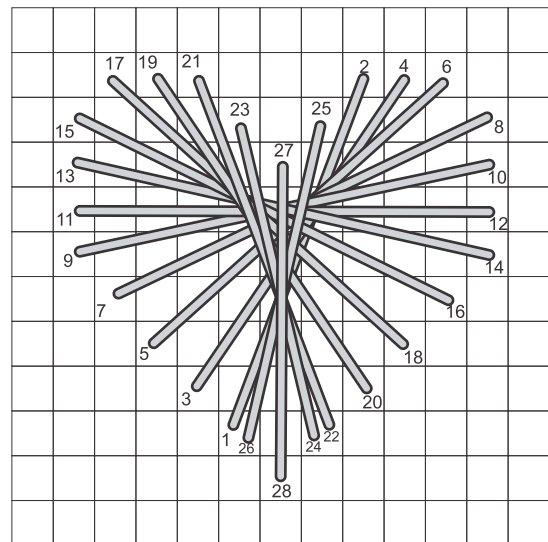
SQUARE ALGERIAN EYELET



(each graph line equals one thread)

1. Bring needle up at **A**, give your thread a little tug to open up the centre hole, and go down at 1.
2. Continue clockwise around the eyelet, bringing your needle up through the centre at **A**, and down on consecutive numbers, tugging firmly on thread on downward needle strokes.

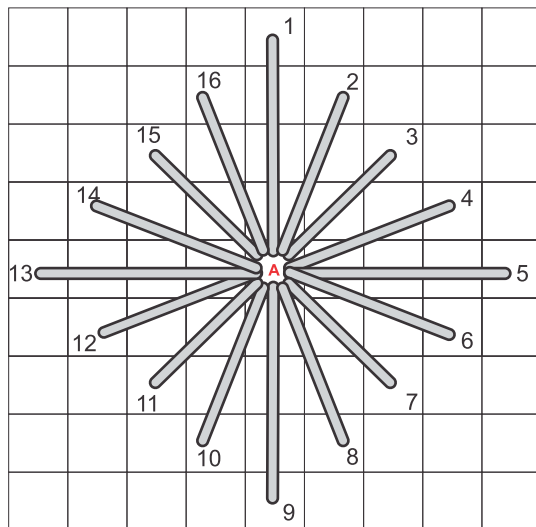
RHODES HEART



(each graph line equals one fabric thread)

1. Bring needle up at 1, and down at 2.
2. Continue clockwise around the heart, coming up on the odd numbers and down on the even numbers.

DIAMOND EYELET



(each graph line equals one fabric thread)

1. Bring needle up at **A**, count out four single threads and bring needle down at 1, and tug thread firmly.
2. Bring needle back up at **A**, and down at 2, again tugging thread firmly.
3. Continue bringing your needle up at **A**, and down on consecutive numbers, tugging firmly on thread on downward needle strokes.



Janie Hubble Designs 

© Janie Hubble Designs | 35 Bailey Road, Lesmurdie, Western Australia 6076 | www.janiehubble.com.au

Whilst we take the utmost care to ensure that all the information contained in this pamphlet is correct, we cannot be held responsible for any human or technical errors contained within. **All rights reserved. No part of this publication may be reproduced, stored in a retrieval system, or transmitted in any form or by any means electronic, mechanical, photocopying, recording, or otherwise without the written permission of Janie Hubble Designs.**