



The size of your chosen tea cup is going to dictate what count linen you decide to stitch the design onto. My teacup had a top diameter of 6cm which is tiny indeed. It looks very dainty and gorgeous, but it was quite a challenge for my eyes to stitch on 40 count linen!

With something that small, I recommend you use one strand of thread, rather than two to complete the stitching.

Of course, you don't have to make a teacup pincushion - this design would work equally as well as a biscornu, or a scissor fob. You are only limited by your imagination dear stitcher!

However, if you do want to make a teacup pin cushion, I have included details on how I made mine on the How To page of my website.

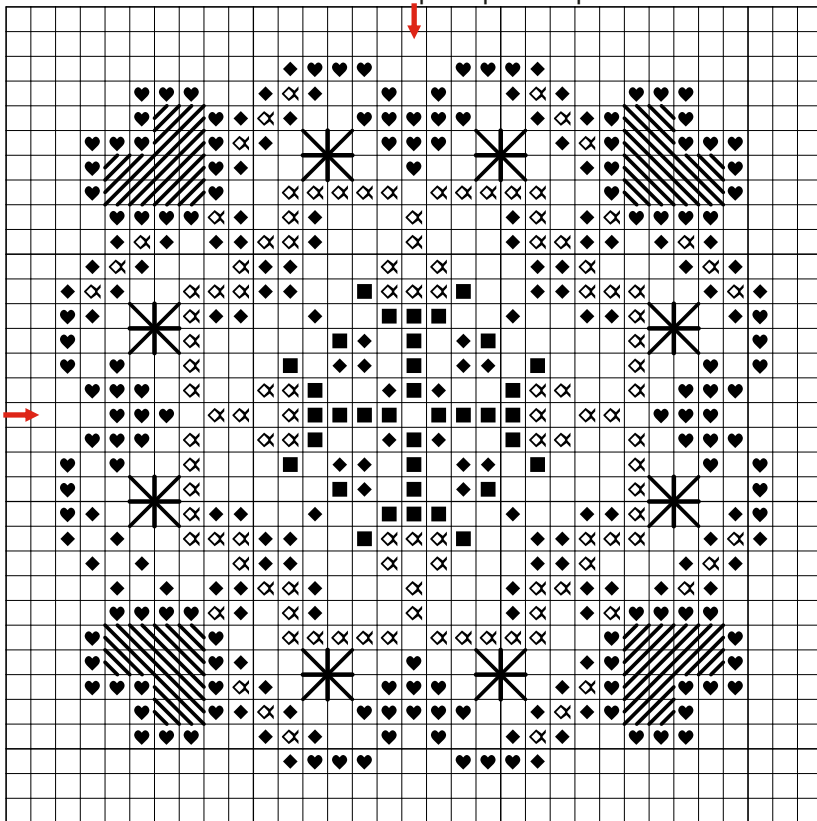
I'd love to see your finished teacup so please send pics when done and I'll put them up on my website.



The design is 29 stitches square. Finished size is:

28 count - 2.07" square
32 count - 1.81" square
40 count - 1.45" square

One Graph Square Equals 2 Linen Threads



© Janie Hubble Designs

Linen Requirement:

Depending on the size of your tea cup, you will need a square piece of linen twice the diameter of the rim, plus 5cm (2") for ease of stitching. This will allow you to cut a circle big enough to make a pin cushion which fits snugly into the teacup.

Symbol Key:

Symbol	DMC	Name
⌘	778	Antq Mauve V Lt
♥	945	Flesh Med
■	3041	Antq Violet Med
◆	3051	Green Gray Dk
—	945	Flesh Med
*	945	Flesh Med

Method:

1. Complete all cross stitches as per chart using 2 strands of thread (except 40 count - where I would recommend using 1 strand)
2. Complete satin stitch in outer hearts using two strands of DMC 945. (40 count - 1 strand)
3. Complete eyelets using 2 strands of DMC 945. (40 count - 1 strand)